



TxLTAP Monthly Newsletter

Volume 2 Issue 2 - March 2024



[ABOUT US](#)

[EMAIL](#)

[AVAILABLE TRAINING](#)



TxLTAP is happy to present the 2024 instructors/team members who make all of this possible! These instructors/team members come from all over the United States with a wide range of backgrounds, including prior military and prior TxDOT.

Transportation News

Drones for Safe Bridge Inspections

Efficient and thorough inspections are essential for various infrastructural assets, yet the current inspection process often proves to be time-consuming and costly. Typically, inspections involve a team of engineers, specialized equipment operators, and personnel trained in climbing techniques. Additionally, logistical arrangements such as traffic management and security measures may be necessary, adding to the overall expenses. Unforeseen challenges and safety considerations can further complicate the inspection process, requiring careful planning and resource allocation. Drones, or unmanned aerial vehicles (UAV's), are an effective and cost-efficient way to inspect equipment and bridges.

[Read more...](#)



Share Your Innovative Ideas with TxLTAP

[SUBMIT](#)



Spring Means an Elevated Risk for Animal-Vehicle Accidents

In countries with extensive road networks, such as the United States, highways serve as crucial routes for both people and goods, connecting various parts of the country. However, these roads often traverse through natural habitats, posing risks to native wildlife. Collisions between vehicles and animals are more frequent than commonly perceived, with estimates suggesting one to two million such incidents annually in the U.S. This not only jeopardizes human safety but also threatens the survival of wildlife species. To address these concerns, state and local transportation authorities are exploring solutions to balance the needs of travelers, ensure road safety, and protect wildlife populations.

According to www.texashighways.com, "Texas drivers report nearly 8,000 crashes a year involving wildlife or domestic animals, and the actual number may be five to 10 higher than reported to law enforcement, according to a 2019 report by the Center for Transportation Research at the University of Texas at Austin."

[Read more...](#)



Federal Funds for Natural Disaster Related Road and Bridge Repairs

As part of the U.S. Department of Transportation’s coordinated approach to help states repair and rebuild roads and bridges, the Federal Highway Administration (FHWA) recently announced it is providing \$729.4 million to 34 states, the District of Columbia, the U.S. Virgin Islands and Puerto Rico. The funds will be used to support repair needs following natural disasters, extreme weather, or catastrophic events, such as hurricanes, flooding and mudslides. These events will receive federal reimbursement funding under the FHWA’s Emergency Relief (ER) program as the result of major disaster declarations.

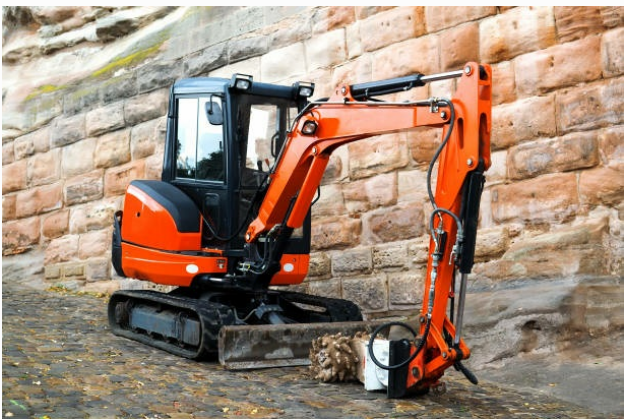
[Read more...](#)

Focus on Training

Mini Excavator - LTP142

Mini excavators offer remarkable power and exceptional maneuverability, making them highly versatile machines. Their advanced hydraulics provide substantial power, enabling them to be utilized in lieu of other construction equipment. With a lighter weight compared to full-size excavators and lower ground pressure, mini excavators are particularly adept at navigating various terrains. Their compact size allows them to access tight spaces that larger excavators, backhoes, and even skid steer loaders struggle to reach, making them perfect for small, narrow, or congested worksites. Benefits of using a mini excavator include the following:

- Small and compact, yet powerful
- Compact swing for tight workspaces



- Useful in less-than-ideal terrain

This 8-hour course aims to equip beginners with the fundamental skills needed to operate these mini excavators effectively. Enrollees will cover essential topics including safety protocols, pre-operation checks, and maintenance routines. They'll also delve into driving techniques, steering maneuvers, and counter-steering methods. Additionally, participants will learn hand signaling, rigging procedures, and safe lifting practices using the bucket. The curriculum will further explore excavating techniques, backfilling procedures, and grading methods, as well as loading and unloading from trailers.

To learn more or register your team for this course, email us at txltap@uta.edu.

Instructor Spotlight



Johnnie Marsden III

Johnnie joined UTA at the beginning of 2024, transitioning from Tampa, Florida. Prior to this role, he served as the Heavy Equipment Trainer at The Lane Construction Corporation, overseeing operations for the \$2.9 billion I-4 Ultimate Project in downtown Orlando, Florida. Johnnie managed training, skill development, and recruitment for all heavy equipment operations, including all yellow iron, aerial work platforms as well as hydraulic and lattice boom cranes. Johnnie's affinity for heavy equipment and training stemmed from his tenure in the USAF as a Pavements and Heavy Equipment Operator, which took him to various locations worldwide. With over 25 years of industry experience, his commitment to excellence in training remains steadfast.



Johnnie's daughters, Natalya (23), Jahzara (20), and Jenesis (13), affectionately characterize him as a fun-loving dad who's always willing to get his hands (or Jeep) dirty diving into any adventure or tackling outdoor projects. He takes pride in nurturing their compassionate spirits and finds joy in witnessing the remarkable women they are evolving into.

Johnnie is excited about his new start at the University of Texas at Arlington. He is not only embracing his role, but also the opportunity to continually learn as he contributes to the LTAP and TxDOT programs.

Information Exchange

Conference Schedule

Visit our exhibit and meet our team at these upcoming conferences:

April 2-4: **ARCIT, Association of Rural Communities in Texas**

April 15-18: **NACE, National Association of County Engineers**

April 23-25: **West Texas County Judges and Commissioners Association**

June 3-5: **Texas APWA Annual Conference**

Advisory Board Positions Available

The TxLTAP Advisory Board consists of engaged individuals who represent Texas' diversity in terms of geographical location, population size, and government organization. The board members have a variety of skills, including insight into particular challenges and trends, current conditions, and technology research. The advisory board convenes at regular intervals throughout the year to provide management with valuable insights into the distinctive and overarching requirements of the program's users. If you are interested in joining, please email us at txltap@uta.edu.

UTA
Division for Enterprise Development

- TxLTAP -

INSTRUCTORS WANTED

Are you looking for your next
adventure in the great
State of Texas?

TXLTAP IS LOOKING FOR EXPERTS IN:

Email Your Resume and
Letter of Interest to:
TxLTAP@uta.edu

UTA
Division for Enterprise Development

- TxLTAP -

UTA | Division for Enterprise Development | TxLTAP
817-272-2581 | txltap@uta.edu | 140 W. Mitchell St. Arlington, TX 76019

✓ Work Zone

✓ Infrastructure

✓ Safety

✓ Heavy Equipment

✓ Management

✓ Flagging

✓ Environmental

✓ Electrical

Interested Candidates

BETTER ROADS
SAFER ROADS

MAKING
STREETS
SAFER

To Improve Safety and
Prevent Roadway Deaths

- TxLTAP -

Division for Enterprise Development

Texas Department of Transportation

UTA

Stay up to Date with TxLTAP's Quarterly Magazine!

Every quarterly magazine will feature articles pertaining to the four FHWA focus areas (roadway departure, intersections, pedestrians, and bicyclists), updates on upcoming training activities, and the latest news regarding new developments from TxLTAP.

[TxLTAP Better Roads Safer Roads](#)

Connect with our Partners

[FHWA](#)

[APWA](#)

[TxDOT](#)

[NACE](#)

[NLTAPA](#)

UTA
Division for Enterprise Development

- TxLTAP -

Contact Us
817-272-2581

f

in

▶

TxLTAP | 140 W. Mitchell Street, Arlington, TX 76019

[Unsubscribe kerri.farley@uta.edu](#)

[Update Profile](#) | [Constant Contact Data](#)



Try email marketing for free today!